

2018 KS2 School Dashboard

for governors & school leaders

Produce custom dashboards at www.fftaspire.org

Mayflower Primary School

LA Tower Hamlets DFE 2112406 Produced September 2018 Version 1

What it is

Seven easy-to-use reports which help governors and school leaders to evaluate school performance using the latest 2017 DfE school performance indicators.

What it tells you

- What are the strengths and areas for improvement in your school?
- How does attainment and pupil progress compare to the national average?
- How are you performing in different subjects?
- Do you have any under-performing groups of pupils?
- How might the context of your school affect performance?
- How does pupil attendance compare to the national average?

About the data shown

1 2 3

Actual results

Actual results for your school, using a range of measures such as averages and thresholds.



Gauges

These display headline indicators and whether actual results and pupils' progress are in line with, or significantly above or below, the national average.

ESTIMATED



1 2 3

Pupil progress

The value added progress that your pupils have made from one key stage to the next. FFT compares your actual results to the estimated results based on the progress of similar pupils nationally.



Statistical significance

Green plus signs and red minus signs highlight where either actual results or pupils' progress is significantly above or below the national average.



Trends

The dashboard analyses school performance over 3-5 years. Any significant year-on-year improvement is highlighted using an up arrow. Significant declines in performance are highlighted with a down arrow.



Strengths & weaknesses

These highlight key pupil groups and subjects where progress is above or below the national average.

Working in partnership with



Data sources

Generated from FFT Aspire which includes data sourced from the DfE (National Pupil Database) and data calculated by FFT. FFT is accredited as a DfE supplier to receive early access to ASP data. Headline performance indicators will be consistent with the DfE School Performance Tables and ASP.

Overview

KS2 Attainment 2018 · Actual results

50 pupils

KS2 Progress 2018 · Value Added

47 matched pupils

Average Scaled Score (Re, Ma)

% Expected standard+ (Re, Wr, Ma)

Average Scaled Score (Re, Ma)

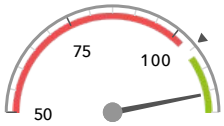
% Expected standard+ (Re, Wr, Ma)

115.7 + ↑

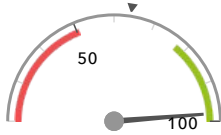
98% +

+9.1 + ↑

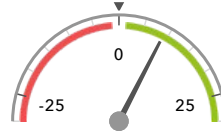
+20% +



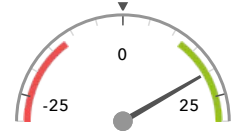
Significantly above the national average (104.7) ◀



Significantly above the national average (64%) ◀



Significantly above the national average (0) ◀



Significantly above the national average (0%) ◀

KS2 higher and lower performing pupil groups 2018

| | Higher performing | Lower performing |
|---|--|------------------|
| Overall achievement pupil progress | Lower attainers (7) + ↑ Not FSM (26) + ↑ Middle attainers (16) + ↑ | |
| KS2 reading achievement pupil progress | Lower attainers (7) + ↑ Not FSM (26) + ↑ Not FSM (ever) (16) + ↑ | |
| KS2 writing achievement pupil progress | Lower attainers (7) + ↑ Summer Term (12) + Not FSM (ever) (16) + | |
| KS2 mathematics achievement pupil progress | Lower attainers (7) + ↑ Male (24) + ↑ Middle attainers (16) + ↑ | |
| KS2 grammar, punctuation & spelling achievement pupil progress | Lower attainers (7) + ↑ Joined in Y5 or Y6 (5) + Middle attainers (16) + ↑ | |

Mayflower Primary School

2018 KS2 VA

Attainment & progress

KS2 Attainment 2018

50 pupils

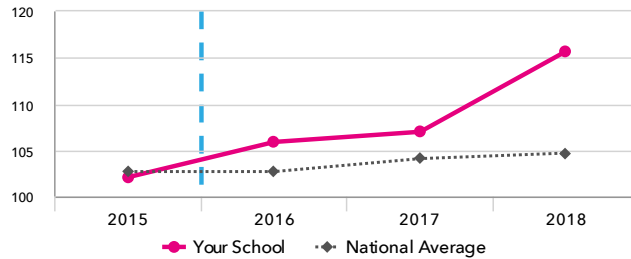
Average Scaled Score (Re, Ma)

115.7 + ↑

FFT Rank



Significantly above the national average (104.7)



KS2 Progress 2018

47 matched pupils

Average Scaled Score (Re, Ma)

+9.1 + ↑

FFT Rank



Significantly above the national average (0)

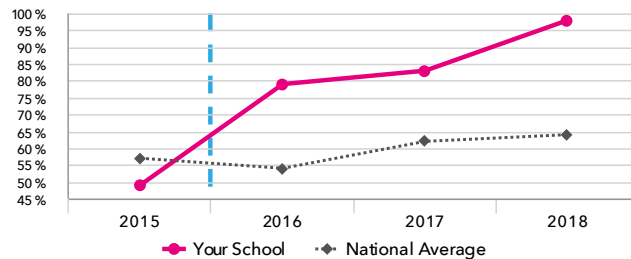
% Expected standard+ (Re, Wr, Ma)

98% +

FFT Rank



Significantly above the national average (64%)



% Expected standard+ (Re, Wr, Ma)

+20% +

FFT Rank



Significantly above the national average (0%)

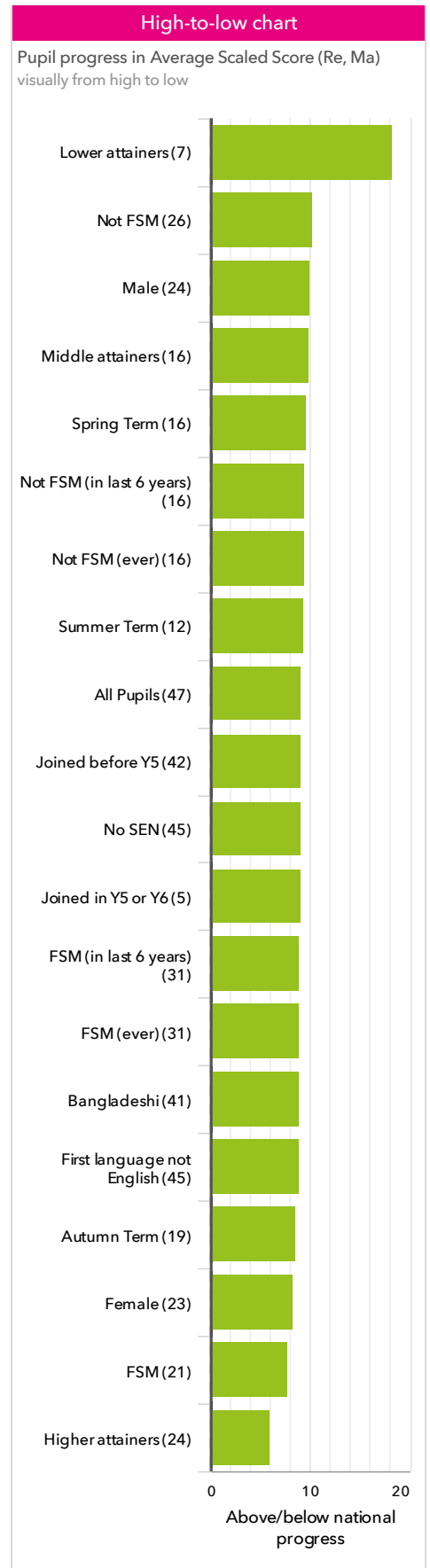
KS2 performance summary

| | Actual results | | | Pupil progress | | |
|--|---|---|---|---|---|---|
| | 2016 | 2017 | 2018 | 2016 | 2017 | 2018 |
| Number of Pupils / % Matched | 43 | 48 | 50 | 98% | 100% | 94% |
| % Expected standard+ (Re, Wr, Ma) | 79% + ↑ | 83% + | 98% + | +21% + | +20% + | +20% + |
| % Higher standard (Re, Wr, Ma) | 12% | 15% | 44% + ↑ | +7% | +4% | +31% + ↑ |
| Average Scaled Score (Re, GPS, Ma) | 106.9 + ↑ | 108.3 + | 116.9 + ↑ | +2.8 + | +2.8 + | +10.0 + ↑ |
| Average Scaled Score (Re, Ma) | 105.9 + ↑ | 107.0 + | 115.7 + ↑ | +2.1 + | +2.9 + | +9.1 + ↑ |
| % Expected standard+ Reading | 79% + ↑ | 88% + | 98% + | +9% | +14% + | +12% + |
| % Higher standard Reading | 23% | 29% | 84% + ↑ | +5% | +2% | +47% + ↑ |
| Scaled Score Reading | 104.4 + ↑ | 107.4 + ↑ | 114.2 + ↑ | +0.7 | +2.5 + | +7.2 + ↑ |
| % Expected standard+ Writing | 91% + | 88% | 100% + | +12% | +9% | +11% + |
| % Higher standard Writing | 28% + | 29% + | 52% + ↑ | +11% | +9% | +24% + |
| Scaled Score Writing | 104.3 + | 104.4 + | 108.2 + ↑ | +2.5 + | +2.7 + | +3.9 + |
| % Expected standard+ Maths | 93% + | 92% + | 100% + | +18% + | +16% + | +15% + |
| % Higher standard Maths | 40% + | 29% | 98% + ↑ | +20% + | +4% | +63% + ↑ |
| Scaled Score Maths | 107.5 + ↑ | 107.0 + | 117.1 + ↑ | +3.4 + | +3.0 + | +10.9 + ↑ |
| % Expected standard+ Grammar, Punctuation & Spelling | 91% + | 90% | 100% + | +12% | +10% | +12% + |
| % Higher standard Grammar, Punctuation & Spelling | 42% + | 69% + ↑ | 100% + ↑ | +16% + | +34% + | +53% + |
| Scaled Score Grammar, Punctuation & Spelling | 108.3 + ↑ | 113.0 + ↑ | 119.3 + ↑ | +3.3 + | +4.2 + | +11.0 + ↑ |
| % Expected standard+ Science | 86% | 92% | 100% + | - | - | - |
| Average Point Score (Re, Wr, Ma) | - | - | - | - | - | - |
| % Level 4+ (Re, Wr, Ma) | - | - | - | - | - | - |
| % Level 4B+ (Re, Wr, Ma) | - | - | - | - | - | - |
| % Level 5+ (Re, Wr, Ma) | - | - | - | - | - | - |

Pupil groups

KS2 Pupil groups performance 2018

| | | Pupils | Actual results | | | Pupil progress | | |
|------------------|---|--------|-------------------------------------|------------------------------------|-----------------------------------|-------------------------------------|------------------------------------|------------------------------------|
| | | | Average Scaled Score (Re, Ma) | % Expected standard + (Re, Wr, Ma) | % Higher standard (Re, Wr, Ma) | Average Scaled Score (Re, Ma) | % Expected standard + (Re, Wr, Ma) | % Higher standard (Re, Wr, Ma) |
| Summary | All Pupils > | 50 | 115.7 + ↑ | 98% + | 44% + ↑ | +9.1 + ↑ | +20% + | +31% + ↑ |
| Gender | Male > | 24 | 116.6 + ↑ | 96% + | 50% + ↑ | +10.0 + ↑ | +18% + | +35% + ↑ |
| | Female > | 26 | 114.9 + ↑ | 100% + | 38% + | +8.2 + ↑ | +22% + | +26% + |
| Prior Attainment | Higher attainers > | 24 | 116.5 + ↑ | 100% | 71% + | +6.0 + ↑ | +5% | +41% + |
| | Middle attainers > | 16 | 114.8 + ↑ | 94% | 25% + | +9.8 + ↑ | +21% | +22% + |
| | Lower attainers > | 7 | 115.8 + ↑ | 100% + | 14% + | +18.2 + ↑ | +73% + | +14% + |
| Pupil Premium | FSM (in last 6 years) > | 32 | 116.1 + ↑ | 97% + | 44% + ↑ | +9.0 + ↑ | +17% + | +29% + |
| | Not FSM (in last 6 years) > | 18 | 115.1 + ↑ | 100% + | 44% + | +9.4 + ↑ | +26% + | +34% + |
| FSM | FSM > | 21 | 115.5 + ↑ | 95% + | 43% + | +7.7 + ↑ | +12% | +25% + |
| | Not FSM > | 29 | 115.9 + ↑ | 100% + | 45% + ↑ | +10.3 + ↑ | +27% + | +35% + ↑ |
| FSM Ever | FSM (ever) > | 32 | 116.1 + ↑ | 97% + | 44% + ↑ | +9.0 + ↑ | +17% + | +29% + |
| | Not FSM (ever) > | 18 | 115.1 + ↑ | 100% + | 44% + | +9.4 + ↑ | +26% + | +34% + |
| Term of Birth | Autumn Term > | 19 | 115.5 + ↑ | 100% + | 42% + | +8.5 + ↑ | +23% + | +24% + |
| | Spring Term > | 18 | 116.4 + ↑ | 100% + | 44% + | +9.6 + ↑ | +21% | +33% + |
| | Summer Term > | 13 | 115.1 + ↑ | 92% + | 46% + | +9.4 + ↑ | +14% | +37% + |
| SEN Group | SEN Support > | 1 | 120.0 | 0% | 0% | +13.3 | -85% | -5% |
| | EHC Plan > | 1 | 111.5 | 100% | 0% | +6.8 | +34% | -1% |
| | No SEN > | 48 | 115.7 + ↑ | 100% + | 46% + ↑ | +9.1 + ↑ | +22% + | +32% + ↑ |
| EAL | First language not English > | 48 | 115.6 + ↑ | 98% + | 44% + ↑ | +8.9 + ↑ | +19% + | +30% + ↑ |
| | First language English > | 2 | 117.8 | 100% | 50% | +14.0 | +38% | +48% |
| Mobility | Joined in Y5 or Y6 > | 6 | 114.1 + | 100% + | 0% | +9.1 + | +33% | -4% |
| | Joined before Y5 > | 44 | 115.9 + ↑ | 98% + | 50% + ↑ | +9.1 + ↑ | +19% + | +35% + ↑ |
| Ethnicity | Black Caribbean > | 2 | 117.8 | 100% | 50% | +14.0 | +38% | +48% |
| | Black African > | 2 | 115.0 | 100% | 50% | +5.9 | +8% | +38% |
| | Indian > | 1 | 113.5 | 100% | 0% | +7.7 | +16% | -5% |
| | Pakistani > | 1 | 119.0 | 100% | 0% | +15.1 | +37% | -1% |
| | Bangladeshi > | 43 | 115.6 + ↑ | 98% + | 47% + ↑ | +8.9 + ↑ | +20% + | +31% + ↑ |
| | Any Other > | 1 | 117.0 | 100% | 0% | - | - | - |



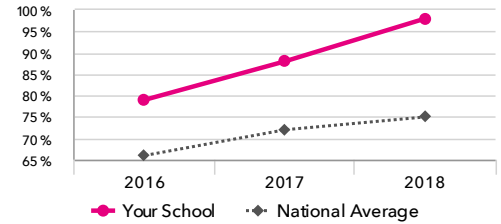
Subjects

KS2 subject performance 2018

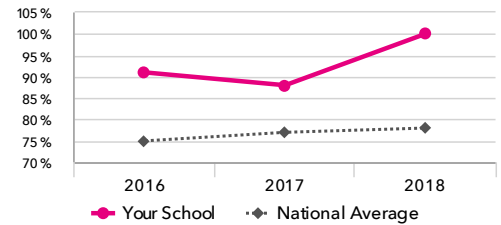
| | Actual results | | | Pupil progress | | |
|--|----------------|---------|----------|----------------|--------|-----------|
| | 2016 | 2017 | 2018 | 2016 | 2017 | 2018 |
| Number of Pupils / % Matched | 43 | 48 | 50 | 98% | 100% | 94% |
| Reading | | | | | | |
| % Expected standard+ | 79% ↑ | 88% ⊕ | 98% ⊕ | +9% | +14% ⊕ | +12% ⊕ |
| % Higher standard | 23% | 29% | 84% ⊕ ↑ | +5% | +2% | +47% ⊕ ↑ |
| Scaled Score | 104 ↑ | 107 ⊕ ↑ | 114 ⊕ ↑ | +0.7 | +2.5 ⊕ | +7.2 ⊕ ↑ |
| Level 4+ | - | - | - | - | - | - |
| Level 4B+ | - | - | - | - | - | - |
| Level 5+ | - | - | - | - | - | - |
| Average Point Score | - | - | - | - | - | - |
| Writing | | | | | | |
| % Expected standard+ | 91% ⊕ | 88% | 100% ⊕ | +12% | +9% | +11% ⊕ |
| % Higher standard | 28% ⊕ | 29% ⊕ | 52% ⊕ ↑ | +11% | +9% | +24% ⊕ |
| Scaled Score | 104 ⊕ | 104 ⊕ | 108 ⊕ ↑ | +2.5 ⊕ | +2.7 ⊕ | +3.9 ⊕ |
| Level 4+ | - | - | - | - | - | - |
| Level 5+ | - | - | - | - | - | - |
| Average Point Score | - | - | - | - | - | - |
| Maths | | | | | | |
| % Expected standard+ | 93% ⊕ | 92% ⊕ | 100% ⊕ | +18% ⊕ | +16% ⊕ | +15% ⊕ |
| % Higher standard | 40% ⊕ | 29% | 98% ⊕ ↑ | +20% ⊕ | +4% | +63% ⊕ ↑ |
| Scaled Score | 108 ⊕ ↑ | 107 ⊕ | 117 ⊕ ↑ | +3.4 ⊕ | +3.0 ⊕ | +10.9 ⊕ ↑ |
| Level 4+ | - | - | - | - | - | - |
| Level 4B+ | - | - | - | - | - | - |
| Level 5+ | - | - | - | - | - | - |
| Average Point Score | - | - | - | - | - | - |
| Grammar, Punctuation & Spelling | | | | | | |
| % Expected standard+ | 91% ⊕ | 90% | 100% ⊕ | +12% | +10% | +12% ⊕ |
| % Higher standard | 42% ⊕ | 69% ⊕ ↑ | 100% ⊕ ↑ | +16% ⊕ | +34% ⊕ | +53% ⊕ |
| Scaled Score | 108 ⊕ ↑ | 113 ⊕ ↑ | 119 ⊕ ↑ | +3.3 ⊕ | +4.2 ⊕ | +11.0 ⊕ ↑ |
| Science | | | | | | |
| % Expected standard+ | 86% | 92% | 100% ⊕ | - | - | - |
| Level 4+ | - | - | - | - | - | - |
| Level 5+ | - | - | - | - | - | - |
| Average Point Score | - | - | - | - | - | - |

Actual results over time

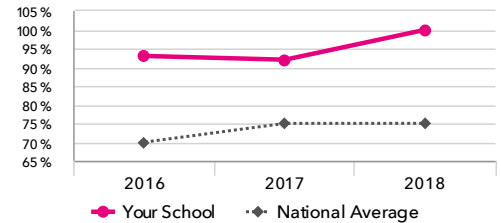
% Expected standard+ Reading



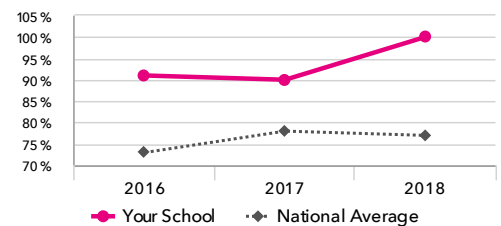
% Expected standard+ Writing



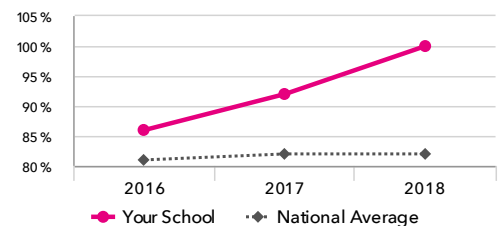
% Expected standard+ Maths



% Expected standard+ Grammar, Punctuation & Spelling



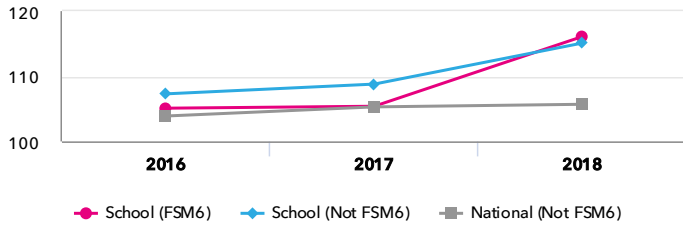
% Expected standard+ Science



Disadvantaged pupils

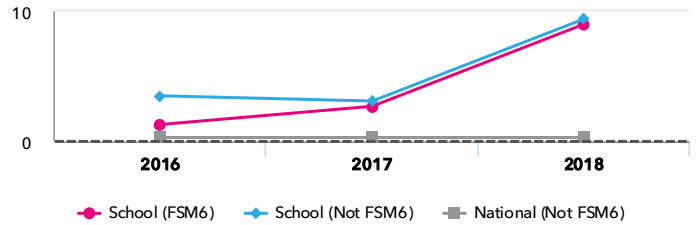
KS2 attainment for disadvantaged pupils 2018

Average Scaled Score (Re, Ma)



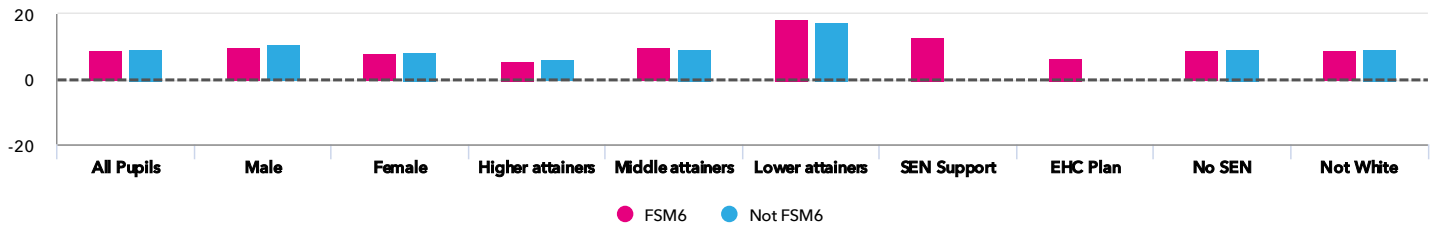
KS2 progress for disadvantaged pupils 2018

Average Scaled Score (Re, Ma)



Progress gap

Average Scaled Score (Re, Ma)

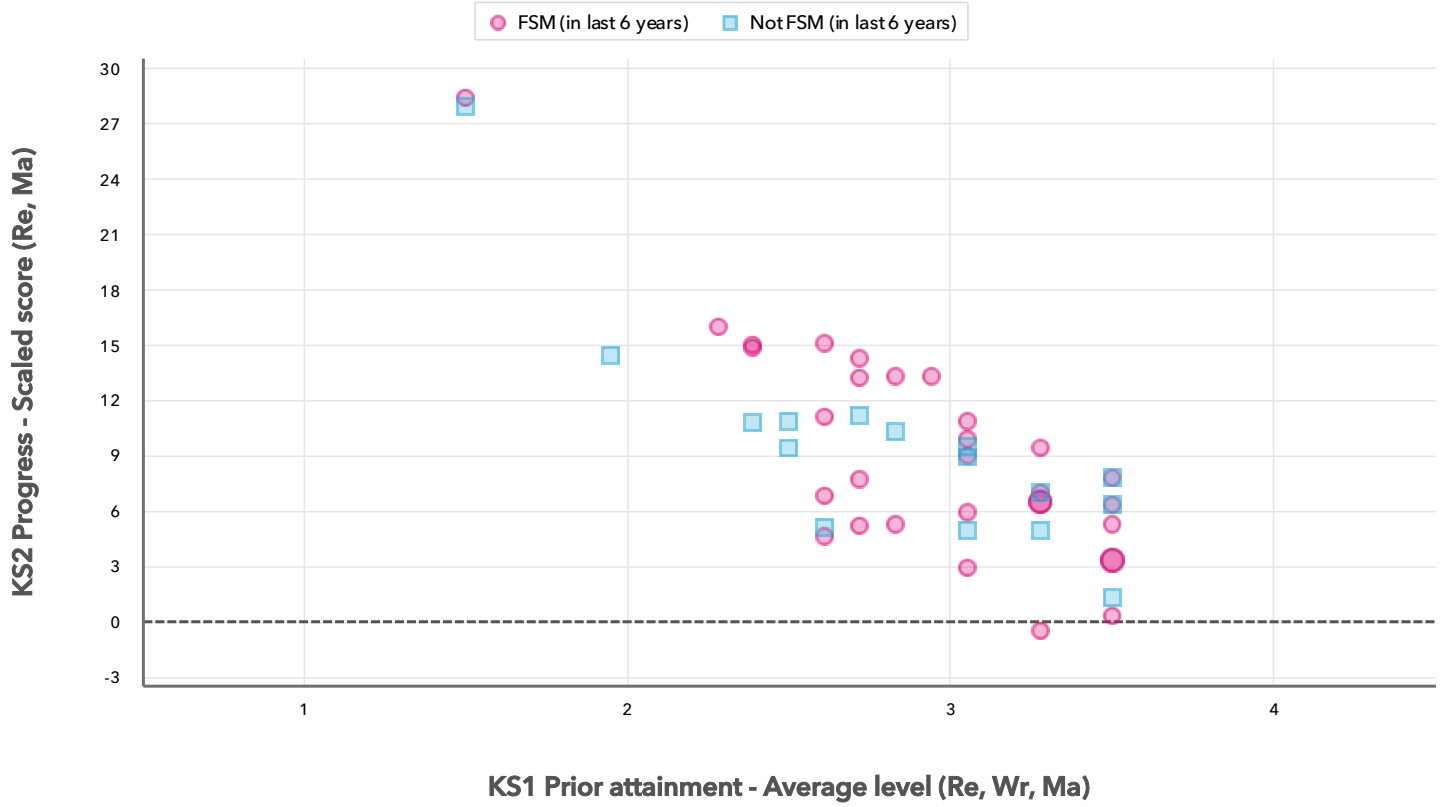


Attainment & progress

| Pupils | | | | Attainment | | | Progress | | |
|------------------|------------------|------|----------|---------------------------------------|---------------------------------------|------|-----------------------------------|-------------------------------------|------|
| | | | | Average Scaled Score (Re, Ma) | | | Average Scaled Score (Re, Ma) | | |
| | | FSM6 | Not FSM6 | FSM6 | Not FSM6 | Gap | FSM6 | Not FSM6 | Gap |
| Summary | All Pupils | 32 | 18 | 116.1 ⬆️ ⬆️ | 115.1 ⬆️ ⬆️ | 1 | 9 ⬆️ ⬆️ | 9.4 ⬆️ ⬆️ | -0.4 |
| Gender | Male | 18 | 6 | 116.4 | 117.3 | -0.9 | 9.7 | 10.9 | -1.2 |
| | Female | 14 | 12 | 115.7 | 114 | 1.7 | 8 | 8.5 | -0.5 |
| Prior Attainment | Higher attainers | 16 | 8 | 116.4 | 116.6 | -0.2 | 5.8 | 6.3 | -0.5 |
| | Middle attainers | 11 | 5 | 115.3 | 113.7 | 1.6 | 10 | 9.4 | 0.6 |
| | Lower attainers | 4 | 3 | 116.9 | 114.3 | 2.6 | 18.6 | 17.7 | 0.9 |
| SEN Group | SEN Support | 1 | - | 120 | - | - | 13.3 | - | - |
| | EHC Plan | 1 | - | 111.5 | - | - | 6.8 | - | - |
| | No SEN | 30 | 18 | 116.1 | 115.1 | 1 | 8.9 | 9.4 | -0.5 |
| Ethnic Group | Not White | 32 | 18 | 116.1 | 115.1 | 1 | 9 | 9.4 | -0.4 |

Scatterplot

KS2 Pupil scatterplot 2018 50 pupils highlighted by Pupil Premium



Context

Context · Year 6 · 2017 / 2018

| | | Pupils | Proportion | |
|------------------|----------------------------|--------|------------|----------|
| | | | School | National |
| Summary | All Pupils | 50 | 100% | 100% |
| Gender | Male | 24 | 48% | 51% |
| | Female | 26 | 52% | 49% |
| Prior Attainment | Higher attainers | 24 | 48% | 31% |
| | Middle attainers | 16 | 32% | 35% |
| | Lower attainers | 7 | 14% | 29% |
| Pupil Premium | FSM (in last 6 years) | 32 | 64% | 30% |
| | Not FSM (in last 6 years) | 18 | 36% | 69% |
| FSM | FSM | 21 | 42% | 15% |
| | Not FSM | 29 | 58% | 85% |
| FSM Ever | FSM (ever) | 32 | 64% | 31% |
| | Not FSM (ever) | 18 | 36% | 69% |
| Term of Birth | Autumn Term | 19 | 38% | 33% |
| | Spring Term | 18 | 36% | 32% |
| | Summer Term | 13 | 26% | 35% |
| SEN Group | SEN Support | 1 | 2% | 15% |
| | EHC Plan | 1 | 2% | 3% |
| | No SEN | 48 | 96% | 82% |
| EAL | First language not English | 48 | 96% | 20% |
| | First language English | 2 | 4% | 80% |
| Mobility | Joined in Y5 or Y6 | 6 | 12% | 7% |
| | Joined before Y5 | 44 | 88% | 93% |
| Ethnicity | Black Caribbean | 2 | 4% | 3% |
| | Black African | 2 | 4% | 6% |
| | Indian | 1 | 2% | 3% |
| | Pakistani | 1 | 2% | 4% |
| | Bangladeshi | 43 | 86% | 2% |
| | Any Other | 1 | 2% | 4% |

Absence · Year 6 · 2017 / 2018

| | | Pupils | Absence | | Persistent absentees | |
|------------------|----------------------------|--------|---------|----------|----------------------|----------|
| | | | School | National | School | National |
| Summary | All Pupils | 50 | 3% | 4% | 4% | 5% |
| Gender | Male | 24 | 3% | 4% | 0% | 6% |
| | Female | 26 | 3% | 4% | 8% | 5% |
| Prior Attainment | Higher attainers | 24 | 2% | 3% | 0% | 2% |
| | Middle attainers | 16 | 4% | 4% | 6% | 4% |
| | Lower attainers | 7 | 5% | 5% | 14% | 10% |
| Pupil Premium | FSM (in last 6 years) | 32 | 3% | 5% | 6% | 12% |
| | Not FSM (in last 6 years) | 18 | 2% | 3% | 0% | 3% |
| FSM | FSM | 21 | 3% | 6% | 10% | 16% |
| | Not FSM | 29 | 3% | 4% | 0% | 4% |
| FSM Ever | FSM (ever) | 32 | 3% | 5% | 6% | 11% |
| | Not FSM (ever) | 18 | 2% | 3% | 0% | 3% |
| Term of Birth | Autumn Term | 19 | 3% | 4% | 5% | 6% |
| | Spring Term | 18 | 2% | 4% | 0% | 6% |
| | Summer Term | 13 | 4% | 4% | 8% | 5% |
| SEN Group | SEN Support | 1 | 4% | 5% | 0% | 10% |
| | EHC Plan | 1 | 4% | 7% | 0% | 20% |
| | No SEN | 48 | 3% | 4% | 4% | 4% |
| EAL | First language not English | 48 | 3% | 4% | 2% | 5% |
| | First language English | 2 | 8% | 4% | 50% | 6% |
| Mobility | Joined in Y5 or Y6 | 6 | 5% | 6% | 17% | 15% |
| | Joined before Y5 | 44 | 3% | 4% | 2% | 5% |
| Ethnicity | Black Caribbean | 2 | 8% | 5% | 50% | 9% |
| | Black African | 2 | 1% | 3% | 0% | 3% |
| | Indian | 1 | 13% | 3% | 100% | 3% |
| | Pakistani | 1 | 3% | 5% | 0% | 6% |
| | Bangladeshi | 43 | 2% | 5% | 0% | 5% |
| | Any Other | 1 | 1% | 4% | 0% | 6% |